



15 Series Air Relief Valves

Rugged design 15 Series air relief valves provide dependable overpressure protection at an economical price. Top guided design features brass construction and resilient seating for superior performance. Widely used by OEM's and for aftermarket replacement.

ASME Section VIII
 Sizes 1/4" to 1"
 Set pressures from 15 to 250 psi
 Maximum Temp. 325°F

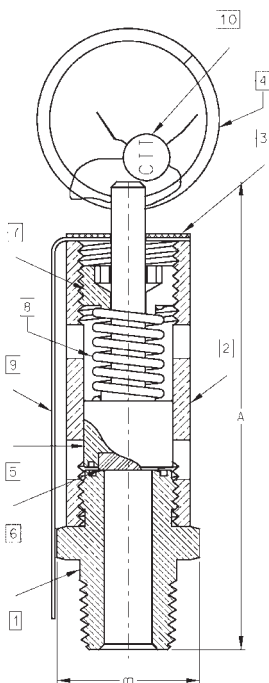
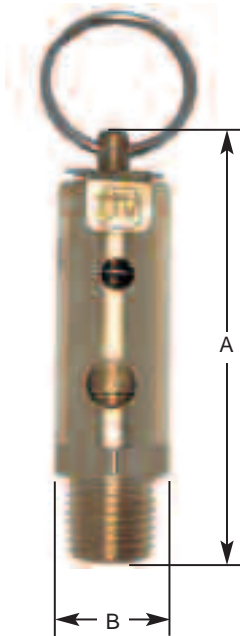
Applications: Ideal for a wide range of air and inert gas applications including compressors, intercoolers, dryers, receivers, control and instrument air lines, and pressurized systems and equipment.

Features

- National Board certified 15 psig through 250 psig
- Stainless steel springs with silicone soft seat
- Viton O-ring seat, 3/4" & 1" only
- Registered in all Canadian provinces and territories: CRN #0G8547.5C
- ASTM B16 Brass Body

Dimensions and Weights

Model Number	Inlet Size (In./mm.)	Dimensions (In./mm.)		Wt./100 (lbs./kg.)
		A	B	
15-112	1/4 NPT	2.62	0.78	18.5
	8	66	20	8.4
15-115	3/8 NPT	3.25	1.12	42.2
	10	82	28	19.2
15-117	1/2 NPT	3.37	1.12	45.3
	15	85	28	20.6
15-118	3/4 NPT	4.06	1.21	58
	20	105	30	26.4
15-119	1 NPT	5.12	1.87	153
	25	130	47	69.5



ORDERING CODE

Use two-digit suffix number to indicate set pressure.

EXAMPLE:

15-117.09 = 1/2" 15 Series set at 150 psig.

P/N Suffix Key

Set Pressure psig	Suffix
15	-A2
20	-A0
25	-A1
30	-A3
35	-A5
40	-01
50	-B3
60	-02
75	-03
80	-04
100	-05
120	-06
125	-07
140	-08
150	-09
160	-10
165	-J1
175	-11
180	-12
200	-13
220	-14
230	-R8
235	-15
250	-16

Materials

Item	Component	Material
1	NOZZLE	ASTM B-16 BRASS
2	BODY	ASTM B-16 BRASS
3	NAMEPLATE	ALUMINUM
4	PULL RING	PLTD. AISI 1018 CRS
5	CHECK/STEM	ASTM B-16 BRASS
6	SEAT 1/4 - 1/2"	SILICONE
	SEAT 3/4 - 1"	VITON
7	CAP	ASTM B-16 BRASS
8	SPRING	ASTM A-227 STEEL
9	INST. TAG	PAPER
10	LEAD SEAL	LEAD

15 Series Air Relief Valves

ASME Section VIII - Air



STANDARD CUBIC FEET PER MINUTE (NORMALIZED CUBIC METERS PER HOUR) OF AIR
AT 10% OVERPRESSURE. NATIONAL BOARD CERTIFIED. RATINGS ARE 90% OF ACTUAL.



U.S. Customary Units SCFM Air					Metric Units Nm ³ /hr.				
Model No.	15-112	15-115 & 117	15-118	15-119	Model No.	15-112	15-115 & 117	15-118	15-119
Size (In.)	1/4	3/8 & 1/2	3/4	1	Size (In.)	1/4	3/8 & 1/2	3/4	1
Set Pressure					Set Pressure				
psig					barg				
15	-	60	107	222	1.03	-	96	172	357
20	-	70	124	256	1.38	-	112	199	411
25	-	79	140	290	1.72	-	127	225	466
30	-	88	156	323	2.07	-	141	251	519
35	-	98	174	361	2.41	-	157	280	580
40	43	109	193	398	2.76	69	175	310	640
45	47	119	211	435	3.10	75	191	339	699
50	51	128	229	473	3.45	82	206	368	760
55	55	139	247	510	3.79	88	223	397	820
60	60	149	265	547	4.14	96	239	426	879
65	64	159	283	584	4.48	103	255	455	939
70	68	170	301	622	4.83	109	273	484	1,000
75	72	179	319	659	5.17	116	288	513	1,059
80	76	190	337	696	5.51	122	305	542	1,119
85	80	200	355	734	5.86	129	321	571	1,180
90	84	210	373	771	6.20	135	337	600	1,239
95	88	220	391	808	6.55	141	354	628	1,299
100	92	230	409	845	6.89	148	370	657	1,358
105	96	241	427	883	7.24	154	387	686	1,419
110	100	251	445	920	7.58	161	403	715	1,479
115	104	261	463	957	7.93	167	419	744	1,538
120	108	271	481	995	8.27	174	436	773	1,599
125	112	281	499	1,032	8.62	180	452	802	1,659
130	116	292	517	1,069	8.96	186	469	831	1,718
135	120	302	535	1,106	9.31	193	485	860	1,778
140	124	312	553	1,144	9.65	199	501	889	1,839
145	129	322	571	1,181	10.00	207	518	918	1,898
150	133	332	589	1,218	10.34	214	534	947	1,958
155	137	342	607	1,256	10.69	220	550	976	2,019
160	141	353	625	1,293	11.03	227	567	1,005	2,078
165	145	363	644	1,330	11.38	233	583	1,035	2,138
170	149	373	662	1,368	11.72	239	600	1,064	2,199
175	153	383	680	1,405	12.06	246	616	1,093	2,258
180	157	393	698	1,442	12.41	252	632	1,122	2,318
185	161	403	716	1,479	12.75	259	648	1,151	2,377
190	165	414	734	1,517	13.10	265	665	1,180	2,439
195	169	424	752	1,554	13.44	272	681	1,209	2,498
200	173	432	770	1,591	13.79	278	694	1,238	2,557
205	-	444	788	1,629	14.13	-	714	1,267	2,619
210	-	454	806	1,666	14.48	-	730	1,296	2,678
215	-	464	824	1,703	14.82	-	746	1,325	2,738
220	-	475	842	1,740	15.17	-	763	1,353	2,797
225	-	484	860	1,778	15.51	-	778	1,382	2,858
230	-	495	878	1,815	15.86	-	796	1,411	2,918
235	-	505	896	1,852	16.20	-	812	1,440	2,977
240	-	515	914	1,890	16.55	-	828	1,469	3,038
245	-	525	932	1,927	16.89	-	844	1,498	3,098
250	-	535	950	1,964	17.24	-	860	1,527	3,157